



At Lida Vets, we offer a uniquely personal service provided by a team of veterinary and nursing professionals.

We work together with you to ensure that your pets remain fit and healthy by preventative care at a lower cost.

We provide a **24-hour emergency service** based at our own premises.



Contact us

24 hour emergency line

01638 600120

T: 01638 560000

E: vets@Lida-vets.co.uk

www.lida-vets.co.uk

Grosvenor Yard, High Street
Newmarket CB8 9AQ

 Find us on Facebook



PPV687-1116



PEACE OF MIND PLAN

Night and **day**
comprehensive
pet health

Save money and
spread the cost



Because **prevention** is always better than cure

Your pet is our priority, relax in the knowledge that your pet's basic preventive health care needs will be met regularly.

In an Emergency? Priority out-of-hours, night and weekend advice and visits. By our own vets and nurses, at our surgery, saving precious time and money.

Benefits include:

- ✓ Annual vaccinations
- ✓ Year round tick, flea and worm control
- ✓ Two health checks a year



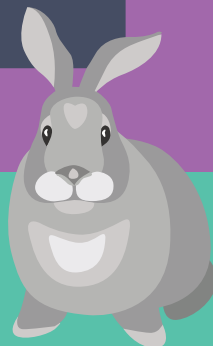
- ✓ 25% discount on primary vaccination course
- ✓ Up to 20% discount on selected services
- ✓ 20% discount on out-of-hours call-out fee
- ✓ Discounted services including de-matting & nails
- ✓ Microchip from only £5



- ✓ Weight loss clinics
- ✓ Dental and flea checks
- ✓ Direct insurance claims on your behalf
- ✓ Invitations to our educational & social events



For more details go to our website:
www.lida-vets.co.uk



Lida Vets Peace of Mind Plan

Plan type		Cost per month
Small dog	(up to 7.5kg)	£11.75
Medium dog	(7.6kg - 15kg)	£13.00
Large dog	(15.1kg - 30kg)	£14.75
Giant dog	(30.1 - 60kg)	£17.75
Cat		£12.00
Rabbit		£6.75

A one off joining fee of £5.00 is collected with your first direct debit payment.

For further information or an agreement form, please speak to our reception team. Alternatively, please call the Pet Health Plans team on **0800 169 9958** to join over the phone.



A cost effective way to cover your best friend's preventative healthcare

